

performance2017



SEA-DOO





Excellence is fuelled by passion. A burning desire to explore the unknown, overcome all obstacles and achieve the unimaginable. A path less travelled, a path where failure often outweighs success.

WELCOME to Sydney Sea-Doo Performance. A diverse range of Sea-Doo watercraft products handmade to enhance your riding experience. Pieces of utmost quality and intricate detail, visible in every strand, direction change and machine pass.



carbon L.E

RXP 300 RXP 339 RXP 379

Automotive 'Supercar' technology in a Personal WaterCraft.

Introducing the ultimate performance machine: **2017 Sea-Doo RXP-X Carbon L.E** by Sydney Sea-Doo Performance. An industry-leading, bespoke range of Sea-Doo Personal Watercraft like no other. Available in three unique horsepower configurations, OEM '300' / '339' / '379' and individually serial-numbered for authenticity, each meticulous hand-assembled carbon fibre unit begins with our 'WF' series hull, showcasing the highest quality components and finest Japanese woven fabrics available.

Powered by the all-new ROTAX 1630 ACE power-plant featuring Closed-Loop Cooling system, genuine Sea-Doo drive train and industry-leading iControl technology including iBR (Intelligent Brake and Reverse), the **Carbon L.E** will not just keep up with the Kardashians, it will blow them clean out of the water.

Despite boasting a finished weight of 300 kilograms, the **Carbon L.E** comes fully loaded. Each unit is presented with our complete range of in-house performance products paired with select pieces from industry-leader **RIVA Racing** as standard equipment. All Sydney Sea-Doo Performance components are designed, developed and manufactured in Australia using certified and graded raw materials.

Our seamless yet simplistic approach of pairing Sydney Sea-Doo Performance alongside 2017 Sea-Doo genuine parts means the **Carbon L.E** can see routine maintenance carried out by any authorized Sea-Doo dealer worldwide.



iBR iTC CLCS T³





339

SEA-DOO

TRIP X

SYDNEY
SEA-DOO

SEA-DOO



The heavyweight division just got a little lighter.

In a world cluttered with Internet trading and cheap offshore cloning it's easy to be misled.

Based off the championship-winning **Sea-Doo RXP-X 'T3'** hull platform, our **'WF'** series carbon fibre hull is manufactured in Australia by a leading factory Superbike/Supercar composite engineer, offering a new standard in quality and precision. Developed over four years in top-level AJSBA and IJSBA competition, our intricate 'Reverse Flange' mould designs paired with the highest quality materials and attention to detail produce a product of unequalled strength, stiffness and accuracy.

Each carbon fibre piece is precisely cut and numbered from calculated patterns. Infusion process is controlled via **MoTeC** electronic computer system presenting unmatched consistency and zero shrinkage once cured.

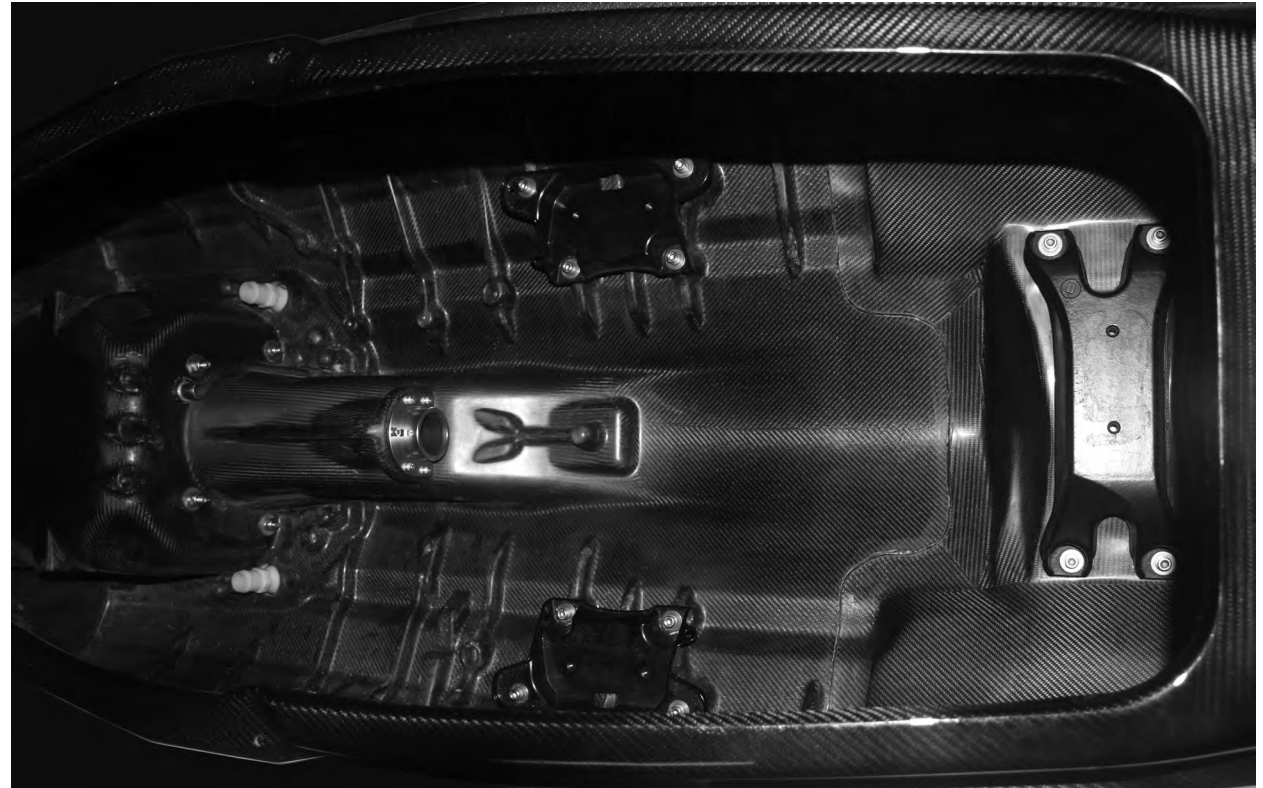
Our unique 'eggshell' manufacturing process sees both body and hull constructed together in unison, erasing structural weak points caused by the bonding of separate upper body and lower hull with Methacrylate during final stages.

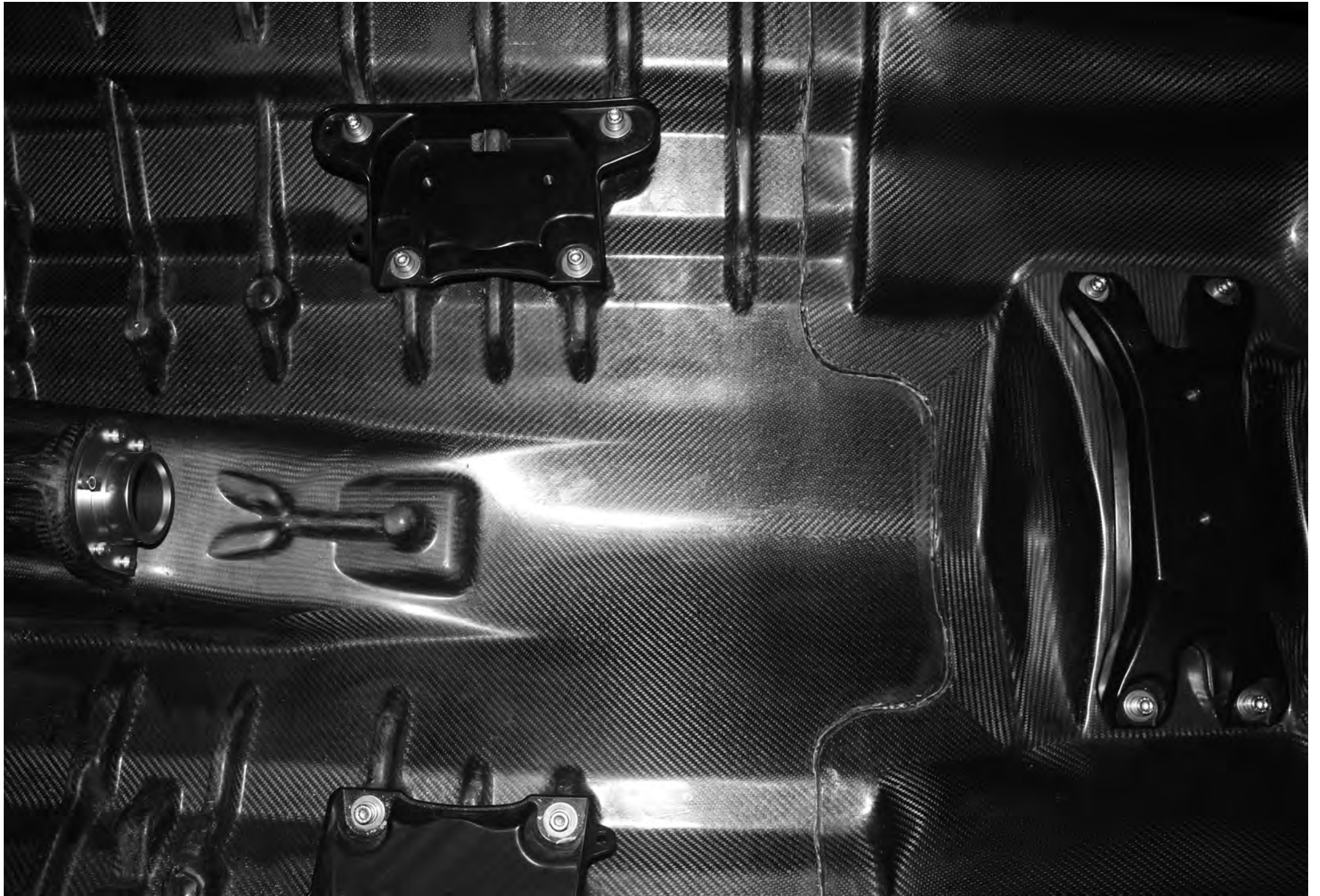
The entire **'WF'** series hull features precision machined, blind-hole metric brass inserts in all OEM mounting locations for exact placement of components. Brass inserts are individually infused between layers to allow correct thermal expansion and contraction throughout entire carbon fibre structure. This eliminates the common issue of delamination and results in a product that will long stand the test of time.

Sold as pictured in raw finish inside and out, displaying seamless joins and perfect detail in every strand.



'WF' series Carbon fibre hull









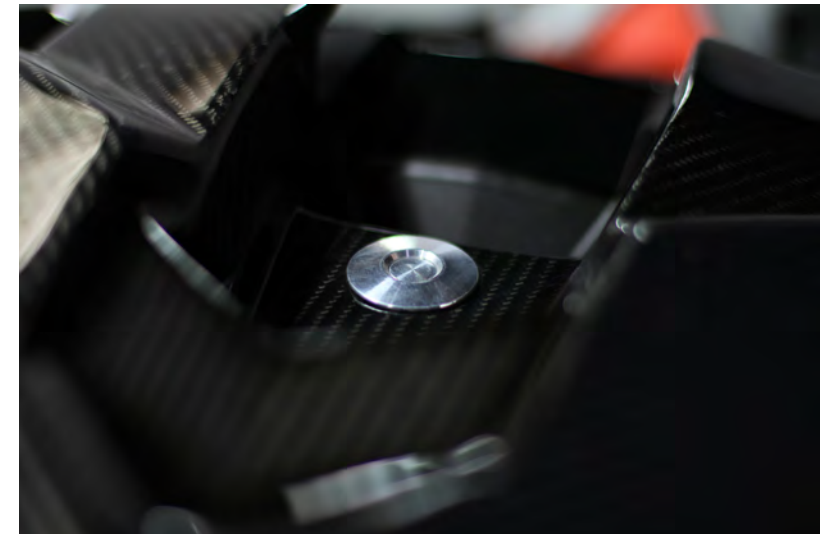
Perfection from all angles. Even the negative ones.



Carbon fibre race hood

This complex piece is simply a work of art. Constructed entirely from Japanese-woven carbon fibre cloth, this intricate one-piece hood features our 'Reverse Flange' technology delivering the ultimate in strength, stiffness and weight reduction. Clone design perfectly silhouettes the shape of OEM counterpart with utmost precision, permitting it legal for IJSBA and UIM Pro competition. Installs directly to OEM mounting arm using original fasteners and stylish push-button, billet aluminum latch. Strong enough to be used and abused in surf and offshore conditions without failure. Includes billet latch with stainless steel internals and neoprene hood seal. Suits RXP-X models 2012 onwards.

2.3kg (5lb) finished weight



Billet push-button hood latch



Riders please stand. For the best seat in the house.



Carbon fibre race seat

Our aim when designing the carbon fibre race seat was to create a piece that was equivalent to factory level, automotive motorsport. Constructed entirely from Japanese-woven carbon fibre cloth, this extremely lightweight product contains more technology than first meets the eye. Saddle area is both raised and narrowed toward the front enabling a vice-like grip through the adductor muscle when hands become separated from the handle bar, whilst rear of saddle has been lowered 40mm to accommodate extra padding for recreational use and a lower centre of gravity for competition use. Precision design features our 'Reverse Flange' technology delivering the ultimate in strength, stiffness and weight reduction. Strong enough to be used and abused in surf and offshore conditions without failure. Once you ride with this seat you will never go back. Padding kit available separately upon request. Includes OEM plastic seat latch, 316 stainless steel hardware and neoprene seal. Suits RXP-X models 2012 onwards.

3.7kg (8.1lb) finished weight


REVERSE FLANGE
TECHNOLOGY


FEATHERLITE


3.7
KILOGRAMS



ROTAX

RXP 339

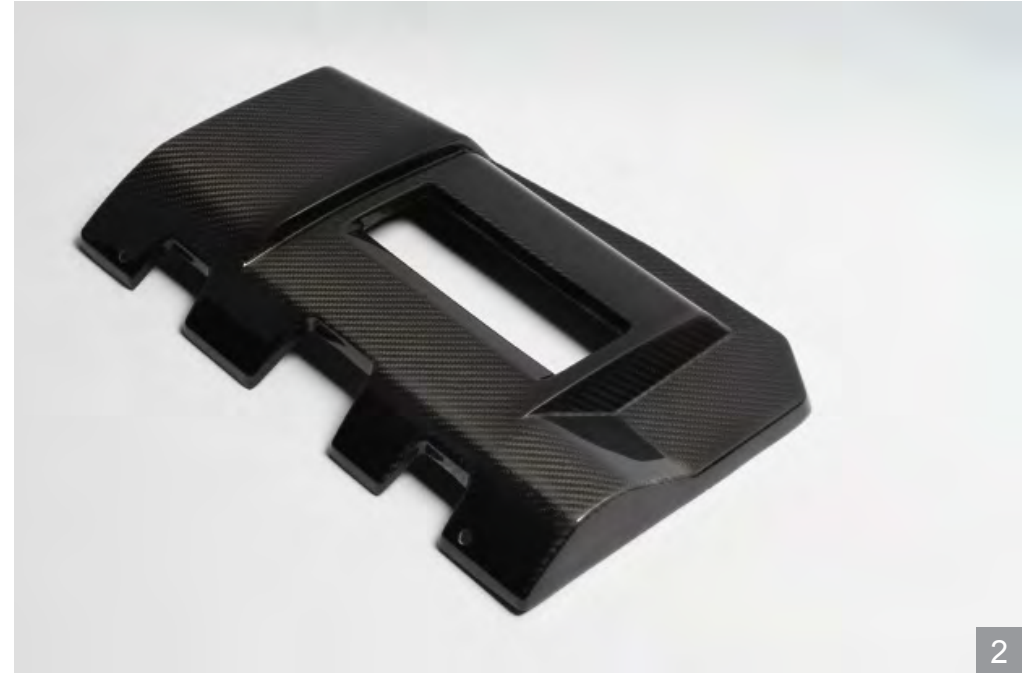


Increasing the carbon footprint one piece at a time.



1 - Carbon fibre race sponson

Made from 100% carbon fibre our sponsons provide the ultimate in stiffness for precision cornering and rider feedback. The proprietary three-piece mould design offers zero flex whilst placed under extreme stress loads during intense competition. Sponson mounts directly to OEM backing rail and are available with and without pre-drilled holes, offering versatility and rider preference. Supplied with 316 stainless steel hardware including drilled oversize washers.



2 - Carbon fibre ECM cover

Enhance the look atop the new ROTAX 1630 ACE powerplant with our lightweight and stylish carbon fibre ECM cover. This piece perfectly compliments our **six-shooter** billet rocker cover set and showcases eye catching 'twill' weave finish whilst protecting expensive Electronic Control Module from the elements.





'Six-Shooter' billet rocker cover / oil cap set

Precision machined from certified 6061 billet aluminium alloy and heat treated to T6 condition. The 'six-shooter' rocker cover and oil cap set underlines the racing spirit of the SEA-DOO RXP-X / RXT-X 300. These pieces utilise all OEM sealing o-rings and special hardware complimented by 316 stainless steel button heads. Anodised coating is carried out here in Australia for optimum quality and fade resistance. The machining detail and finish is a work of art.

ROTAX 1503 4-TEC 2006 - 2017



ROTAX 1630 ACE 2016 - 2017





1



2

1 - Bar extension / handle grip kit

Added handle bar width provides greater leverage and response to your Sea-Doo watercraft. Machined from billet aluminium to exact tolerance they suit genuine ODI Lock-On, PWC specific handle grip. Anodised to prevent corrosion and supplied with 316 stainless steel hardware. Suits most Sea-Doo models.

2 - Billet thru-hull fitting

Billet Thru-hull fitting suits our 'WF series' and OEM Sea-Doo RXP-X hull from 2012 onwards. Available in two lengths, OEM and 'short' which suits our billet driveshaft carrier and machined driveshaft assembly.



3

3 - RIVA racing iControl lever

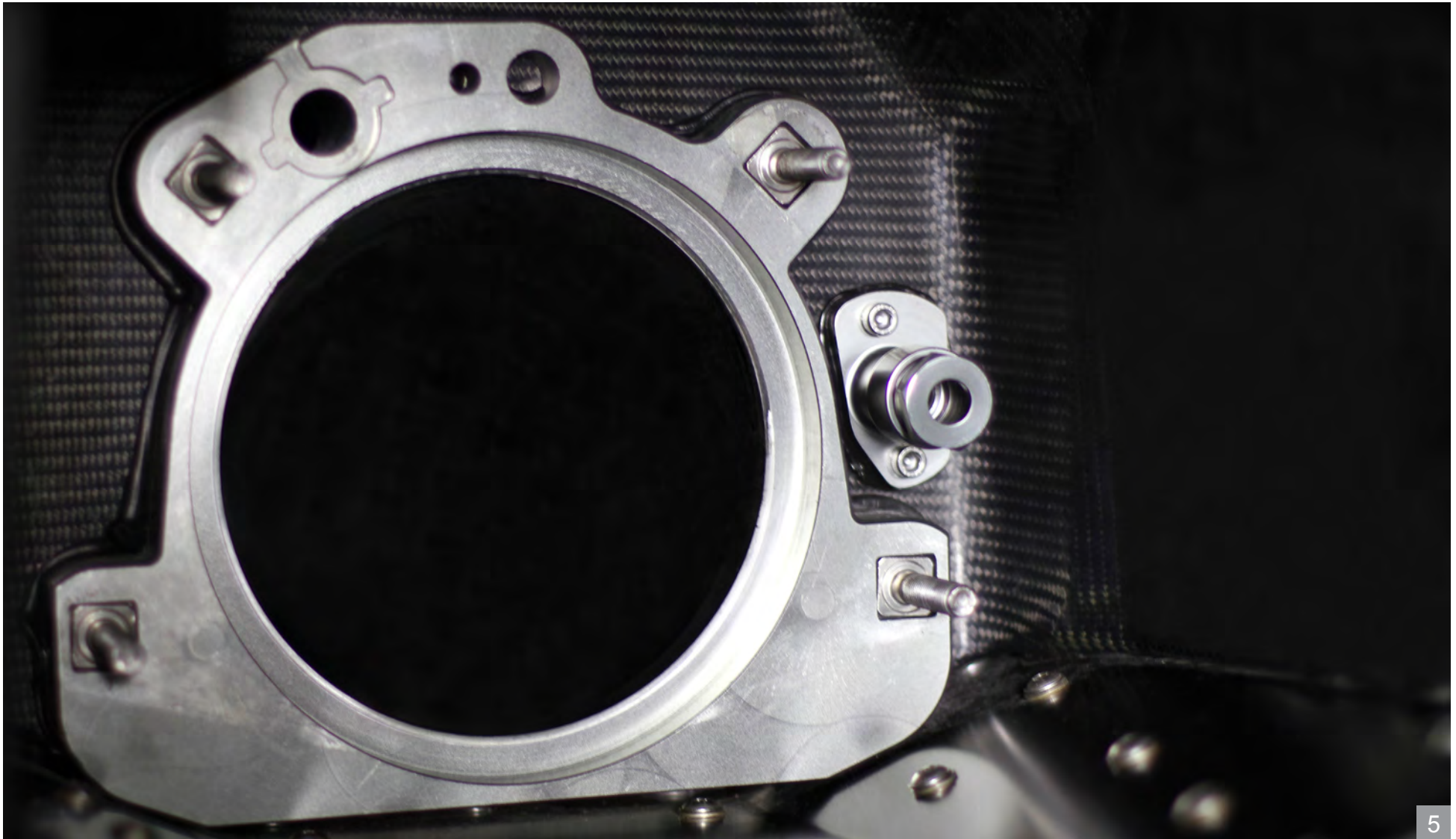
Genuine RIVA racing iControl levers. Cutting-edge race styling and a more responsive feel due to unique stainless steel return spring. Constructed from billet aluminium and anodized in our very own 'Titanium-Grey' colorway to prevent corrosion.

4 - Billet steering cable mount

Steer cable mount consists of billet perch and nut, eliminating all flex and eventual failure associated with the OEM counterpart. A must for watercraft producing high-horsepower.




4



5 - Billet pump shoe

Billet pump shoe for high-horsepower and racing applications. Accurately machined from certified aluminium alloy, artificially hardened and coated with hard anodised finish for optimum wear and corrosion resistance. Our piece eliminates all flex and distortion when placed under load unlike the plastic OEM counterpart. The $\frac{3}{4}$ inch water feed is machined into the design whilst standard metric 8mm mounting studs are replaced with much stronger 10mm studs. OEM Jet pump locating dowels are machined in as standard unless otherwise specified upon ordering.

A close-up, low-angle shot of a boat's throttle control. The throttle is a black, textured lever with a prominent red ring at its base. It is mounted on a white, curved housing. The background is dark, with a hint of a green mesh or screen in the upper right corner. The lighting is dramatic, highlighting the textures and metallic components of the throttle.

For enquiries;
P. +61 2 9526 6304
E. jm@sydneyseadoo.com
W. sydneyseadoo.com
[facebook.com/sydneyseadoodperformance](https://www.facebook.com/sydneyseadoodperformance)

SYDNEY SEA-DOO
1002 King Georges Road
Blakehurst NSW 2221
Sydney AUSTRALIA



JET PILOT

SEA-DOO

ARCHIES
RACE DRILL MASTERS

DVS
SPI
thor

SEA-DOO

SYDNEY
SEA-DOO

BRP